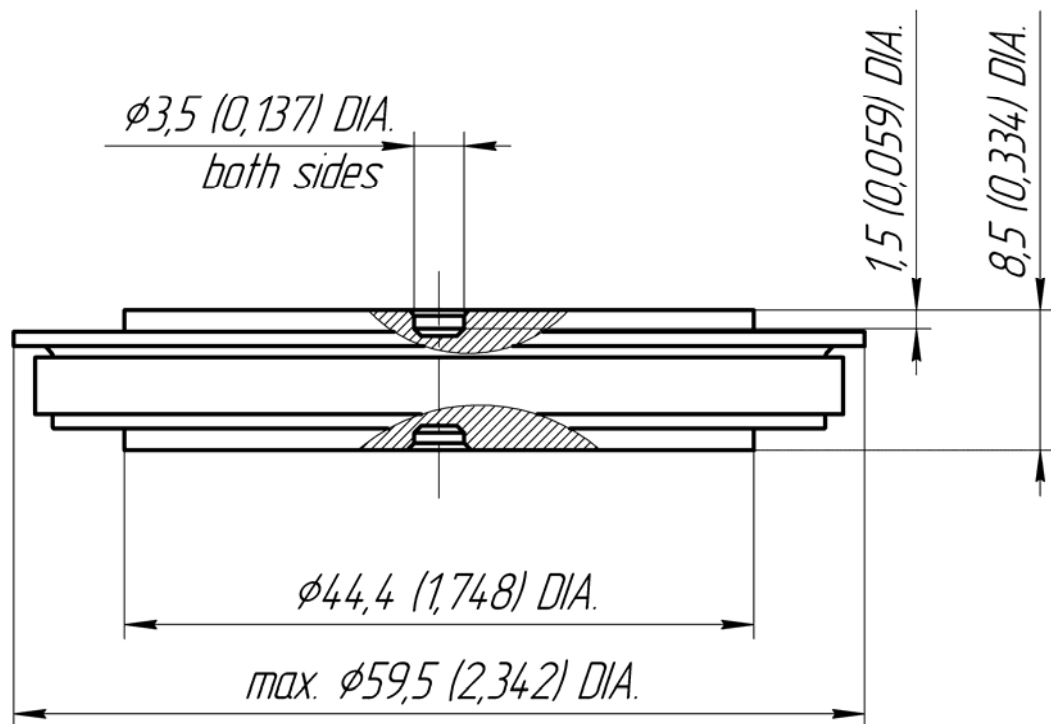




**Package Type** D.H1

Mounting Force **20.0 ÷ 24.0 kN**  
Nominal Weight **140 g**



**D<sub>s</sub>** **7.3 (0.287)**

*The surface creepage distance is defined as the shortest path along the ceramic surface between the anode and cathode flanges*

**D<sub>a</sub>** **4.0 (0.157)**

*The air distance is defined as the shortest direct path between the anode and cathode flanges*