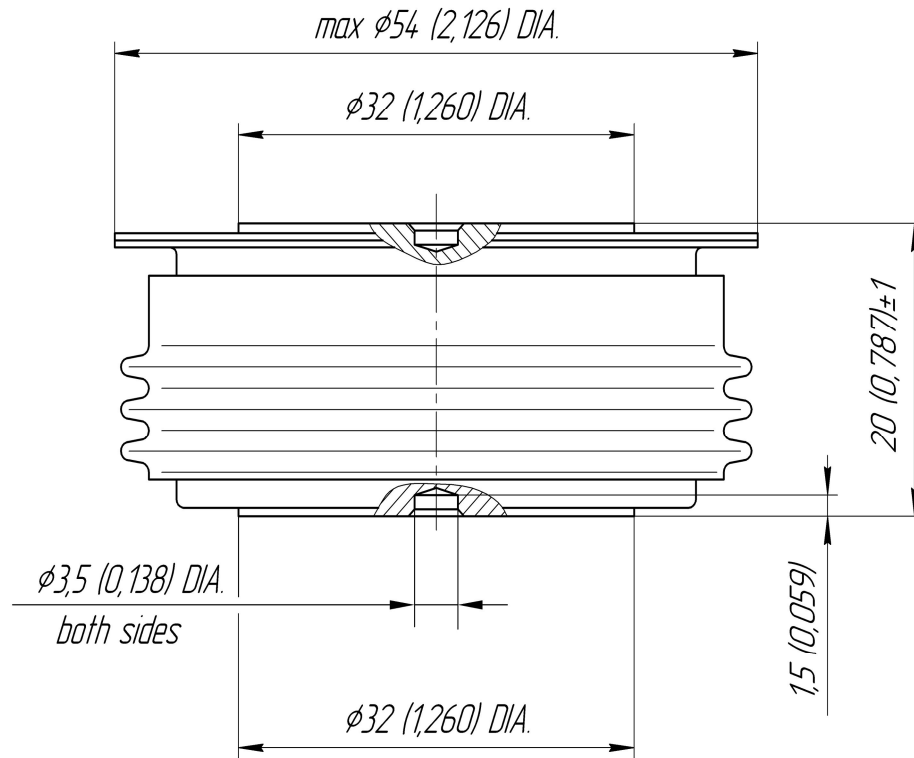




Package Type **D.B2**

Mounting Force **9.0 ÷ 11.0 kN**
Nominal Weight **180 g**



D_s **23.69 (0.933)**

The surface creepage distance is defined as the shortest path along the ceramic surface between the anode and cathode flanges

D_a **19.10 (0.752)**

The air distance is defined as the shortest direct path between the anode and cathode flanges